

# ARGILLE

26X60,5 | 10,2"X23,8"  
RIVESTIMENTI IN PASTA BIANCA  
WHITE BODY WALL TILES  
PAVIMENTI IN GRES FINE PORCELLANATO  
FINE PORCELAIN STONEWARE FLOORS

Ammiro la Natura,  
accogliente e meravigliosa ...

I ADMIRE NATURE, WELCOMING AND WONDERFUL...

È FONTE INESAURIBILE DI ISPIRAZIONE.  
COLORI E SFUMATURE INCANTEVOLI,  
SI RINNOVANO OGNI GIORNO,  
COLORANDO  
LA QUOTIDIANITÀ,  
CREANDO ATMOSFERE SUGGESTIVE,  
AMBIENTI VITALI E CONFORTEVOLI.

IT IS AN INEXHAUSTIBLE SOURCE OF  
INSPIRATION.  
ENCHANTING COLOURS AND SHADES,  
THEY CHANGE DAY BY DAY, BRINGING  
COLOUR TO EVERYDAY LIFE,  
CREATING EVOCATIVE ATMOSPHERES,  
COMFORTABLE AND VIBRANT  
ENVIRONMENTS.

02  
06

CONCEPT

AMBIENTI - SETTINGS

34

CODICI - CODES

39

TABELLE - TABLES



# Storia e Natura, eterne muse di stile

HISTORY AND NATURE, ETERNAL MUSES OF STYLE



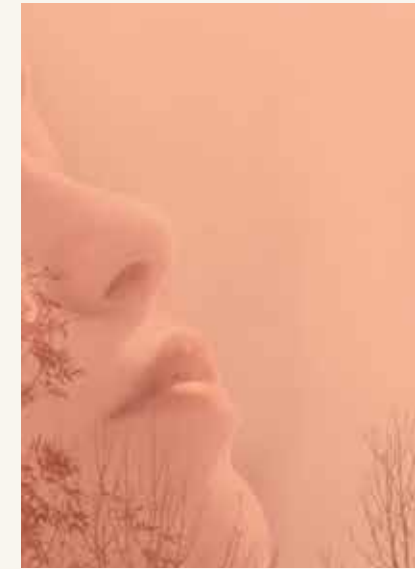
SUGAR



NOGAL



ALMOND



RUST



BERRY

ARGILLE, UN RAFFINATO PROGETTO DECORATIVO, GIOCATO SULL'ACCOSTAMENTO ARMONICO TRA I COLORI DELLA NATURA E I DISEGNI DELLE PAVIMENTAZIONI RINASCIMENTALI.

LE SUPERFICI EFFETTO MATT SI ISPIRANO AL CEMENTO, IN TONALITÀ MORBIDE E NATURALI; PERFETTAMENTE COORDINATA LA GAMMA DEI DECORI. UNA COLLEZIONE DI PAVIMENTI E RIVESTIMENTI COMPLETA E VERSATILE, IN SINTONIA CON LE TENDENZE PIÙ ATTUALI DI INTERIOR DESIGN.

ARGILLE, A REFINED DECORATIVE PROJECT, BASED ON THE HARMONIOUS BLEND BETWEEN THE COLOURS OF NATURE AND THE DESIGNS OF RENAISSANCE FLOORING.

THE MATT EFFECT SURFACES ARE CREATED IN CONCRETE, IN SOFT AND NATURAL TONES, PERFECTLY COORDINATING THE RANGE OF DECORS.

A COMPLETE AND VERSATILE COLLECTION OF FLOORINGS AND WALL TILING, IN TUNE WITH THE LATEST TRENDS IN INTERIOR DESIGN.





26x60,5

UNA GAMMA CROMATICA CHE PRIVILEGIA TONI NEUTRI, MORBIDI E NATURALI. IL RIVESTIMENTO IN PASTA BIANCA, FORMATO 26X60,5 CM, È PROPOSTO ANCHE IN FORMATO 26X26 CHIAMATO ATMOSPHERE, ISPIRATO A DECORAZIONI RINASCIMENTALI, RINNOVATE, STILIZZATE E INTERPRETATE IN CHIAVE PIÙ ATTUALE; E IN UNA VERSIONE CON TAGLI A MATTONCINO, CHE PREVEDE ANCHE UNA TONALITÀ PIÙ VIVACE, CURRY. I PAVIMENTI, IN GRES FINE PORCELLANATO, SONO IN FORMATO 60X60 CM.

A COLOUR RANGE THAT FAVOURS SOFT AND NATURAL NEUTRAL TONES. THE WHITE BODY TILES, IN 26X60,5 CM SIZE, ARE ALSO OFFERED IN A 26X26 CM SIZE CALLED ATMOSPHERE, A REMINISCENT OF THE RENAISSANCE DECORATIONS, UPDATED, STYLISED AND INTERPRETED IN A MORE CONTEMPORARY DESIGN. AND A VERSION WITH BRICK CUTS WHICH ALSO PROVIDES A MORE VIBRANT TONALITY, CURRY. THE FLOORING, FINE PORCELAIN STONEWARE, ARE IN SIZE 60X60 CM.

atmosphere  
26x26

60x60





AMBIENTE REALIZZATO CON / SETTING REALIZED WITH  
SPACATELLA BERRY 30X30



# ALMOND & BERRY







AMBIENTE REALIZZATO CON / SETTING REALIZED WITH  
ALMOND 26X60,5 - BERRY 26X60,5 - ATMOSPHERE BERRY 26X26 - SPACCATELLA BERRY 30X30  
BERRY PAV. 60X60



AMBIENTE REALIZZATO CON / SETTING REALIZED WITH  
ALMOND 26X60,5 - BERRY 26X60,5 - ATMOSPHERE BERRY 26X26





AMBIENTE REALIZZATO CON / SETTING REALIZED WITH  
WALL SUGAR 26X60,5 - EVOQUE NOGAL 26X60,5



# SUGAR & NOGAL







AMBIENTE REALIZZATO CON / SETTING REALIZED WITH  
SUGAR 26X60,5 - WALL SUGAR 26X60,5 - EVOQUE NOGAL 26X60,5  
NOGAL PAV. 60X60





AMBIENTE REALIZZATO CON / SETTING REALIZED WITH  
SUGAR 26X60,5 - NOGAL 26X60,5 - WALL NOGAL 26X60,5 - FASCIA BELIZE NOGAL 26X60,5 - LISTELLO BELIZE NOGAL 6X60,5,  
MOSAICO NOGAL 30X30 - NOGAL PAV. 60X60





AMBIENTE REALIZZATO CON / SETTING REALIZED WITH  
SUGAR 26X60,5 - FASCIA BELIZE NOGAL 26X60,5 - LISTELLO BELIZE NOGAL 6X60,5  
WALL NOGAL 26X60,5





AMBIENTE REALIZZATO CON / SETTING REALIZED WITH  
RUST 26X60,5 - LISTELLO CUT RUST 7X60,5



R U S T







AMBIENTE REALIZZATO CON / SETTING REALIZED WITH  
RUST 26X60,5 - EVOQUE RUST 26X60,5 - SPACCATELLA RUST 30X30 - LISTELLO CUT RUST 7X60,5  
RUST PAV. 60X60





AMBIENTE REALIZZATO CON / SETTING REALIZED WITH  
EVOQUE RUST 26X60,5





AMBIENTE REALIZZATO CON / SETTING REALIZED WITH  
SPACCAPELLA CURRY 30X30 - SPACCAPELLA LINE CURRY 30X30



WALL  
BERRY & CURRY





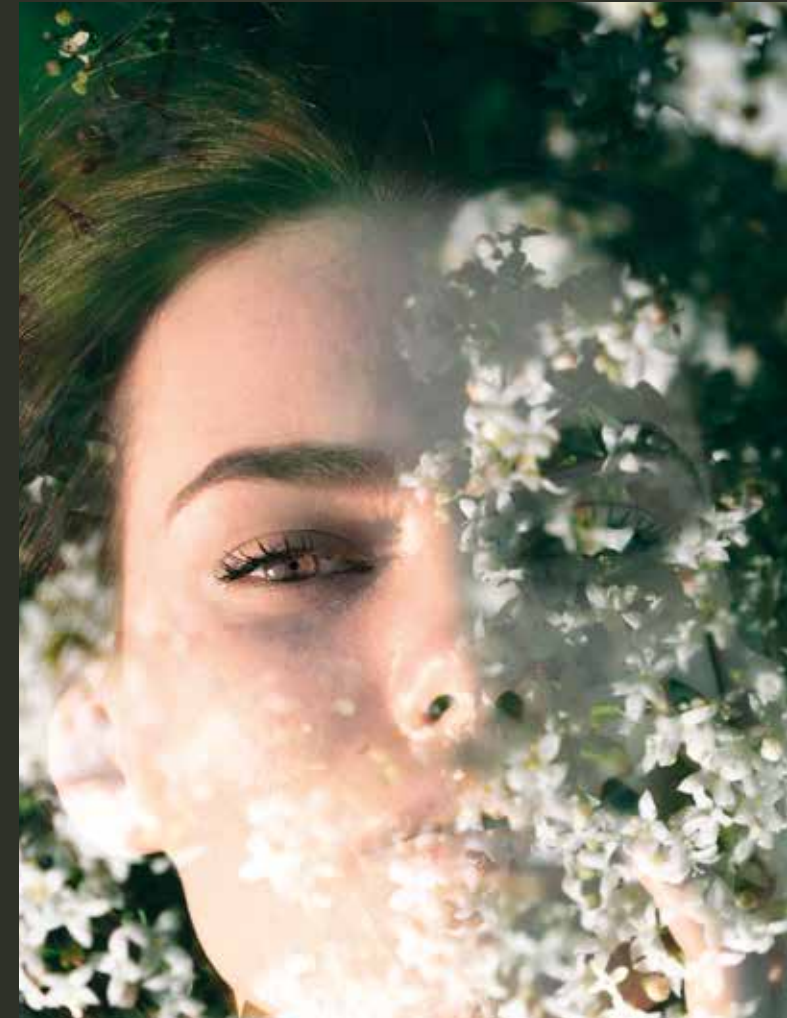


AMBIENTE REALIZZATO CON / SETTING REALIZED WITH  
BERRY 26X60,5 - WALL CURRY 26X60,5 - SPACCATELLA CURRY 30X30 - SPACCATELLA BERRY 30X30 - SPACCATELLA LINE CURRY 30X30  
BERRY PAV. 60X60





AMBIENTE REALIZZATO CON / SETTING REALIZED WITH  
NOGAL 26X60,5 - ATMOSPHERE NOGAL 26X26



# NOGAL







AMBIENTE REALIZZATO CON / SETTING REALIZED WITH  
MODULO WALL ALMOND 8,2X29,8 - ALMOND PAV. 60X60



ALMOND







26x60,5  
86846 Almond / ■ 97



26x60,5  
87068 Wall Almond / ■ 105



8,2x29,8  
88281 Modulo Wall Almond / ■ 175



26x60,5  
88042 Berry / ■ 107



26x60,5  
87095 Wall Berry / ■ 115



8,2x29,8  
88282 Modulo Wall Berry / ■ 175



26x60,5  
86843 Rust / ■ 107



26x60,5  
87101 Wall Rust / ■ 115



8,2x29,8  
88287 Modulo Wall Rust / ■ 175



26x60,5  
87096 Wall Curry / ■ 115



8,2x29,8  
88283 Modulo Wall Curry / ■ 175



26x60,5  
88116 Fascia Belize Rust / ● 93



26x26  
88105 Atmosphere Rust \* / ● 23



26x60,5  
89089 Evoque Rust \* / ■ 113



7x60,5  
89149 Listello Cut Rust / ● 45



26x60,5  
88114 Fascia Belize Berry / ● 93



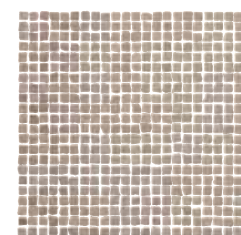
26x26  
88103 Atmosphere Berry \* / ● 23



6x60,5  
88461 Listello Belize Berry / ● 45

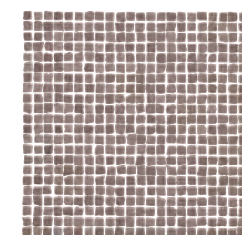


7x60,5  
89150 Listello Cut Berry / ● 45

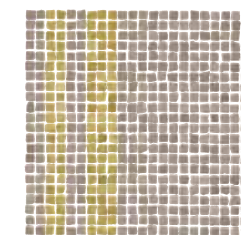


30x30  
88122 Spaccatella Rust / ● 88

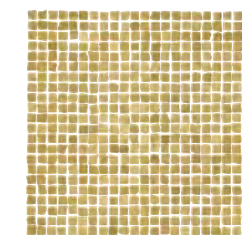
\* Versione decoro con più soggetti, confezionati random.  
Decor version with multiple subjects, packaged randomly.



30x30  
88118 Spaccatella Berry  
● 88



30x30  
88123 Spaccatella Line Curry  
● 95



30x30  
88119 Spaccatella Curry  
● 88

\* Versione decoro con più soggetti, confezionati random.  
Decor version with multiple subjects, packaged randomly.



# ARGILLE

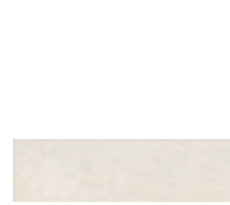
RIVESTIMENTI IN PASTA BIANCA - WHITE BODY WALL TILES



26x60,5  
86844 Sugar / ■ 97



26x60,5  
88044 Wall Sugar / ■ 105



8,2x29,8  
88285 Modulo Wall Sugar / ■ 175



26x60,5  
86842 Nogal / ■ 107



26x60,5  
88043 Wall Nogal / ■ 115



8,2x29,8  
88284 Modulo Wall Nogal / ■ 175



26x60,5  
88115 Fascia Belize Nogal / ● 93



6x60,5  
88462 Listello Belize Nogal / ● 45



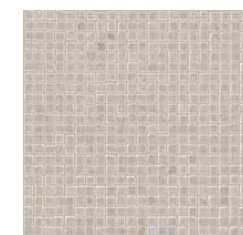
26x26  
88104 Atmosphere Nogal \* / ● 23



26x60,5  
89088 Evoque Nogal \* / ■ 113



7x60,5  
89148 Listello Cut Nogal / ● 45

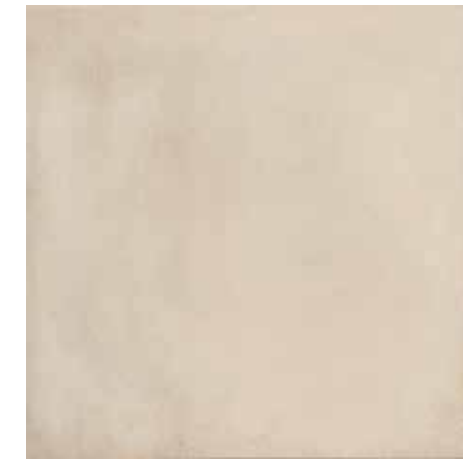


30x30  
88120 Spaccatella Nogal / ● 88

\* Versione decoro con più soggetti,  
confezionati random.  
Decor version with multiple subjects,  
packaged randomly.

# ARGILLE

PAVIMENTI IN GRES FINE PORCELLANATO - FINE PORCELAIN STONEWARE FLOORS



60x60  
88099 Almond / ■ 99



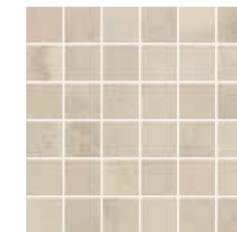
60x60  
88101 Nogal / ■ 99



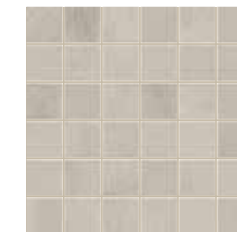
60x60  
88102 Rust / ■ 99



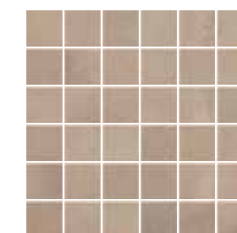
60x60  
88100 Berry / ■ 99



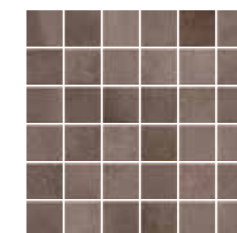
4,7x4,7 su rete 30x30  
89200 Mosaico Almond / ● 29



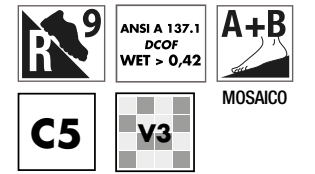
4,7x4,7 su rete 30x30  
89204 Mosaico Nogal / ● 29



4,7x4,7 su rete 30x30  
89205 Mosaico Rust / ● 29



4,7x4,7 su rete 30x30  
89203 Mosaico Berry / ● 29





Categorie d'impiego per pavimenti in gres fine porcellanato  
Use classes for fine porcelain stoneware floors

Variazioni cromatiche  
Colour variations

|           |  |  |  |
|-----------|--|--|--|
| <b>C1</b> | <b>Piastrelle da pavimento consigliate per calpestio leggero</b><br>Floor tiles recommended for light traffic              |  | <b>V1 Aspecto uniforme</b><br>Even appearance    |
| <b>C2</b> | <b>Piastrelle da pavimento consigliate per calpestio medio-leggero</b><br>Floor tiles recommended for medium-light traffic |  | <b>V2 Lieve variazione</b><br>Light variation    |
| <b>C3</b> | <b>Piastrelle da pavimento consigliate per calpestio medio</b><br>Floor tiles recommended for medium traffic               |  | <b>V3 Media variazione</b><br>Medium variation   |
| <b>C4</b> | <b>Piastrelle da pavimento consigliate per calpestio medio-pesante</b><br>Floor tiles recommended for medium-heavy traffic |  | <b>V4 Intensa variazione</b><br>Strong variation |
| <b>C5</b> | <b>Piastrelle da pavimento consigliate per calpestio intenso</b><br>Floor tiles recommended for high traffic               |  |  |

È indispensabile all'atto della posa, prelevare le piastrelle da più confezioni.  
It is necessary to take the tiles from several different boxes when laying them.

## Pesi e Imballi rivestimento / wall tile

Weights and packaging

|                    | 26x60,5 | 26x60,5 FASCIA | 8,2x29,8 modulo wall | 6x60,5 listello | 7x60,5 listello | 30x30 spaccatella |
|--------------------|---------|----------------|----------------------|-----------------|-----------------|-------------------|
| <b>Pc.</b>         | 8       | 2              | 18                   | 4               | 4               | 5                 |
| <b>m²</b>          | 1,26    | -              | 0,439                | -               | -               | -                 |
| <b>Kg</b>          | 18      | 5,076          | 7,61                 | 2,34            | 2,46            | 7,26              |
| <b>Colli/Boxes</b> | 48      | -              | 112                  | -               | -               | -                 |
| <b>m²</b>          | 60,48   | -              | 49,25                | -               | -               | -                 |
| <b>Kg</b>          | 864     | -              | 852,32               | -               | -               | -                 |

## Pesi e Imballi pavimento / floor tile

Weights and packaging

|                    | 60x60 | 30x30 mosaico |
|--------------------|-------|---------------|
| <b>Pc.</b>         | 3     | 11            |
| <b>m²</b>          | 1,08  | 1             |
| <b>Kg</b>          | 23    | 19,44         |
| <b>Colli/Boxes</b> | 40    | 36            |
| <b>m²</b>          | 43,2  | 36            |
| <b>Kg</b>          | 920   | 699,84        |

## Note / Notes

I prodotti possono essere modificati da Fincibec senza preavviso, respingendo ogni responsabilità su possibili danni diretti o indiretti causati da potenziali modifiche.  
Fincibec reserves the right to modify its products without prior notice and cannot be held liable for direct or indirect damage caused by such modifications.

Verificare sempre la correttezza delle informazioni e dei dati relativi a codici, imballaggi e pesi, consultando il listino prezzi in vigore.  
Always refer to the price list in force to ensure correct information and data on codes, packaging, and weight.

Le tonalità dei colori riportate nel catalogo sono indicative / The colours shades, reported on the catalogue, are indicative.

## CARATTERISTICHE TECNICHE / PASTA BIANCA

TECHNICAL SPECIFICATIONS - TECHNISCHE EIGENSCHAFTEN - CARACTÉRISTIQUES TECHNIQUES - CARACTERÍSTICAS TÉCNICAS - ТЕХНИЧЕСКИЕ ХАРАКТЕРИСТИКИ

STANDARDS : UNI EN 14411 ANNEX L - BIII / UNI EN ISO 13006 ANNEX L - BIII

| CARATTERISTICHE TECNICHE<br>TECHNICAL DATA<br>TECHNISCHE DATEN<br>CARACTÉRISTIQUES TECHNIQUES<br>CARACTERÍSTICAS TÉCNICAS<br>ТЕХНИЧЕСКИЕ ХАРАКТЕРИСТИКИ  | TIPO DI PROVA<br>STANDARD OF TEST<br>NORME DU TEST<br>TESTNORM<br>TIPO DE PRUEBA<br>ТИП ТЕСТА | VALORI PRESCRITTI DALLE NORME<br>INTERNATIONAL STANDARDS<br>INTERNATIONALE NORMWERTE<br>VALEURS PRÉVUES PAR LES NORMES<br>VALORES PREVISTOS POR LAS NORMAS<br>ПРЕДПОЛОЖЕННЫЕ СТАНДАРТОМ |                       | VALORE MEDIO/AVG VALLE<br>NAVOS MITTELWERT<br>VALEURS MOYEN/NAVOS<br>VALOR MEDIO/NAVOS<br>СРЕДНЕЕ ЗНАЧЕНИЕ/NAVOS  |
|--|---|---|-----------------------|---|
|  |   | REQUIREMENTS FOR NOMINAL SIZE N   |                       | MATT  |
| CARATTERISTICHE DIMENSIONALI - SIZE CHARACTERISTICS - MASSEIGENSCHAFTEN - DÉTERMINATION DES CARACTÉRISTIQUES DIMENSIONNELLES<br>CARACTERÍSTICAS DIMENSIONALES - РАЗМЕРНЫЕ ХАРАКТЕРИСТИКИ   |   | 7 mm ≤ N < 15 mm  | N ≥ 15 mm             |   |
| <b>LATI</b><br>SIDES - SEITEN<br>COTES - CANTOS<br>РАЗМЕРЫ СТОРОН  | EN ISO 10545-2  | ± 0,75 mm   | ± 0,5 %<br>(± 2,0 mm) | CONFORME<br>COMPLYING - ERFÜLLT<br>CONFORME - CONFORME<br>COOTBETCTBYET   |
| <b>SPESSORE</b><br>THICKNESS - DICKE<br>ÉPAISSEUR - ESPESOR<br>ТОЛЩИНА   | EN ISO 10545-2  | ± 0,5 mm  | ± 10 %<br>(± 0,5 mm)  | CONFORME<br>COMPLYING - ERFÜLLT<br>CONFORME - CONFORME<br>COOTBETCTBYET   |
| <b>RETTILINEITÀ DEGLI SPIGOLI</b><br>STRAIGHTNESS OF SIDES - GERADLINIGKEIT DER KANTEN<br>RECTITUDE DES ARÊTES - RECTITUD DE LOS CANTOS - КОСОУГОЛЬНОСТЬ   | EN ISO 10545-2  | ± 0,5 mm  | ± 0,3%<br>(± 1,5 mm)  | CONFORME<br>COMPLYING - ERFÜLLT<br>CONFORME - CONFORME<br>COOTBETCTBYET   |
| <b>ORTOGONALITÀ</b><br>RECTANGULARITY - RECHTWINKELIGKEIT<br>PERPENDICULARITÉ - ORTOGONALIDAD<br>КРИВИЗНА СТОРОН   | EN ISO 10545-2  | ± 0,75 mm   | ± 0,5%<br>(± 2,0 mm)  | CONFORME<br>COMPLYING - ERFÜLLT<br>CONFORME - CONFORME<br>COOTBETCTBYET   |
| <b>PLANARITÀ</b><br>SURFACE FLATNESS - EBENFLÄCHIGKEIT<br>PLANEITE DE SURFACE - PLANEIDAD<br>КРИВИЗНА ЛИЦЕВОЙ ПОВЕРХНОСТИ  | EN ISO 10545-2  | CENTRE CURVATURE  | + 0,75 mm<br>- 0,5 mm | + 0,5% (+2,0 mm)<br>- 0,3% (-1,5 mm)  |
|  |   | EDGE CURVATURE  | + 0,75 mm<br>- 0,5 mm | + 0,5% (+2,0 mm)<br>- 0,3% (-1,5 mm)  |
|  |   | WARPAGE   | + 0,75 mm             | ± 0,5% (+2,0mm)   |
| <b>ASSORBIMENTO D'ACQUA</b><br>WATER ABSORPTION - WASSERAUFNAHME<br>ABSORPTION D'EAU - ABSORCIÓN DE AGUA<br>ВОДОПОГЛОЩЕНИЕ   | EN ISO 10545-3  | E <sub>p</sub> ≤ 10%  |                       | 10% < E <sub>p</sub> ≤ 20%  |
| <b>RESISTENZA ALLA FLESSIONE</b><br>FLEXION RESISTANCE - BIEGEFESTIGKEIT<br>RESISTANCE A LA FLEXION - RESISTENCIA A LA FLEXIÓN<br>ПРЕДЕЛ ПРОЧНОСТИ ПРИ ИЗГИБЕ  | EN ISO 10545-4  | > 600 N<br>> 12 Nmm <sup>2</sup> .  |                       | CONFORME<br>COMPLYING - ERFÜLLT<br>CONFORME - CONFORME<br>COOTBETCTBYET   |
| <b>RESISTENZA ALL'URTO</b><br>IMPACT RESISTANCE - STOSSFESTIGKEIT<br>RESISTANCE AUX CHOCES - RESISTENCIA A LOS GOLPES<br>УДАРНОСТОЙКОСТЬ   | EN ISO 10545-5  | VALORE DICHIARATO<br>DECLARED VALUE - ANGEGBENER WERT<br>VALEUR DÉCLARÉE - VALOR DECLARADO -<br>ЗАЯВЛЕННОЕ ЗНАЧЕНИЕ   |                       | > 0,6   |
| <b>COEFFICIENTE DI DILATAZIONE TERMICA LINEARE</b><br>COEFFICIENT OF LINEAR THERMAL EXPANSION - LINEARER WÄRMEAUSSDEHNUNGSKOEFFIZIENT<br>COEFFICIENT DE DILATATION THERMIQUE LINEARE - COEFICIENTE DE DILATACIÓN TÈRMICA LINEAL<br>КОЭФФИЦИЕНТ ЛИНЕЙНОГО ТЕРМИЧЕСКОГО РАСТЯЖЕНИЯ   | EN ISO 10545-8  | VALORE DICHIARATO<br>DECLARED VALUE - ANGEGBENER WERT<br>VALEUR DÉCLARÉE - VALOR DECLARADO -<br>ЗАЯВЛЕННОЕ ЗНАЧЕНИЕ   |                       | α = 6,7x10 <sup>-6</sup> /°C  |
| <b>RESISTENZA AGLI SBALZI TERMICI</b><br>RESISTANCE TO THERMAL SHOCKS - BESTÄNDIGKEIT GEGEN TEMPERATURSCHWANKUNGEN<br>RESISTANCE AUX CHOCES THERMIQUES - RESISTENCIA A LOS CHOQUES TÈRMICOS<br>СТОЙКОСТЬ К ПЕРЕПАДАМ ТЕМПЕРАТУРЫ   | EN ISO 10545-9  | TEST SUPERATO SECONDO EN ISO 10545-1<br>TEST PASSED ACCORDING TO - TEST BESTANDEN NACH<br>TEXTE DÉPASSÉ SELON - PRUEBA SUPERADA SEGÚN<br>ИСПЫТАНИЕ ПРОЙДЕНО В СООТВЕТСТВИИ С            |                       | NESSUN DANNO<br>NO DAMAGE - KEIN SCHADEN<br>AUCUN DOMMAGE - NINGUN DAÑO<br>БЕЗ ПОВРЕЖДЕНИЙ  |
| <b>DILATAZIONE ALL'UMIDITÀ (IN MMM)</b><br>MOISTURE EXPANSION (IN MMM) - FEUCHTIGKEITSBEDINGTE AUSDEHNUNG (IN MMM)<br>DILATACION A LA HUMEDAD (EN MMM) - DILATACION CON LA HUMEDAD (EN MMM)<br>ВЛАЖНОСТНОЕ РАСТЯЖЕНИЕ (В MMM)  | EN ISO 10545-10   | VALORE DICHIARATO<br>DECLARED VALUE - ANGEGBENER WERT<br>VALEUR DÉCLARÉE - VALOR DECLARADO -<br>ЗАЯВЛЕННОЕ ЗНАЧЕНИЕ   |                       | MAX 0,2 mm / m  |
| <b>RESISTENZA AI PRODOTTI CHIMICI USO DOMESTICO E ADDITIVI PER PISCINA</b><br>RESISTANCE TO HOUSEHOLD AND SWIMMING POOL CHEMICAL PRODUCTS - REBESTÄNDIGKEIT GEGEN HAUSHALTSCHENIKALIEN UND ZUSATZSTOFFE FÜR SWIMMINGPOOLS - RESISTANCE AUX PRODUITS CHIMIQUES USAGE DOMESTIQUE ET ADDITIFS POUR PISCINE - RESISTENCIA A LOS PRODUCTOS QUÍMICOS DE USO DOMESTICO Y ADITIVOS PARA PISCINA - СТОЙКОСТЬ К ДЕЙСТВИЮ БЫТОВЫХ ХИМИЧЕСКИХ СРЕДСТВ, ДОБАВКАМ В БАССЕЙНЫ | EN ISO 10545-13   | GB MIN  |                       | CONFORME<br>COMPLYING - ERFÜLLT<br>CONFORME - CONFORME<br>COOTBETCTBYET   |
| <b>RESISTENZA A BASSE CONCENTRAZIONI DI ACIDI E ALCALI</b><br>RESISTANCE TO LOW CONCENTRATIONS OF ACIDS AND ALKALI - BESTÄNDIGKEIT BEI NIEDRIGEN KONZENTRATIONEN VON SÄUREN UND LAUGEN - RESISTANCE À HAUTES CONCENTRATIONS D'ACIDES ET ALCALIS - RESISTENCIA A BAJAS CONCENTRACIONES DE ÁCIDOS Y ALCALIS - СТОЙКОСТЬ К ДЕЙСТВИЮ НИЗКИХ КОНЦЕНТРАЦИЙ КИСЛОТ И ЩЕЛОЧЕЙ  | EN ISO 10545-13   | VALORE DICHIARATO<br>DECLARED VALUE - ANGEGBENER WERT<br>VALEUR DÉCLARÉE - VALOR DECLARADO -<br>ЗАЯВЛЕННОЕ ЗНАЧЕНИЕ   |                       | CONFORME<br>COMPLYING - ERFÜLLT<br>CONFORME - CONFORME<br>COOTBETCTBYET   |
| <b>RESISTENZA AD ALTE CONCENTRAZIONI DI ACIDI E ALCALI</b><br>RESISTANCE TO HIGH CONCENTRATIONS OF ACIDS AND ALKALI - BESTÄNDIGKEIT BEI HOHEN KONZENTRATIONEN VON SÄUREN UND LAUGEN - RESISTANCE À HAUTES CONCENTRATIONS D'ACIDES ET ALCALIS - RESISTENCIA A ALTAS CONCENTRACIONES DE ÁCIDOS Y ALCALIS - СТОЙКОСТЬ К ДЕЙСТВИЮ ВЫСОКИХ КОНЦЕНТРАЦИЙ КИСЛОТ И ЩЕЛОЧЕЙ  | EN ISO 10545-13   | VALORE DICHIARATO<br>DECLARED VALUE - ANGEGBENER WERT<br>VALEUR DÉCLARÉE - VALOR DECLARADO -<br>ЗАЯВЛЕННОЕ ЗНАЧЕНИЕ   |                       | CONFORME<br>COMPLYING - ERFÜLLT<br>CONFORME - CONFORME<br>COOTBETCTBYET   |
| <b>RESISTENZA ALLE MACCHIE</b><br>RESISTANCE TO STAINS - FLECKENBESTÄNDIGKEIT<br>RESISTANCE AUX TACHES - RESISTENCIA A LAS MANCHAS<br>УСТОЙЧИВОСТЬ К ПЯТНООБРАЗОВАНИЮ  | EN ISO 10545-14   | CLASSE 3 MIN  |                       | 5   |
| <b>CESSIONE DI PIOMBO E CADMIO</b><br>LEAD AND CADMIUM DISCHARGE - ABGABE VON BLEI UND CADMIUM<br>PERTE DE PLOMB ET CADMIUM - CESIÓN DE PLOMO Y CADMIO<br>ВЫДЕЛЕНИЕ СВИНЦА И КАДМИЯ  | EN ISO 10545-15   | VALORE DICHIARATO<br>DECLARED VALUE - ANGEGBENER WERT<br>VALEUR DÉCLARÉE - VALOR DECLARADO -<br>ЗАЯВЛЕННОЕ ЗНАЧЕНИЕ   |                       | < AL LIMITE DI RILEVAMENTO<br>< THAN INSTRUMENT LIMIT - UNMESSBARES WERT<br>< LIMITE DE L'INSTRUMENT - LIMITE DEL INSTRUMENTO<br>< НА ПРЕДЕЛЕ ОПРЕДЕЛИМОСТИ |

PER I CERTIFICATI SPECIFICI, E VALORI PUNTUALI, CONTATTARE FINCIBEC SPA - FOR SPECIFIC CERTIFICATES AND DATA, CONTACT FINCIBEC S.P.A. - FÜR SPEZIELLE ZERTIFIKATE UND PUNKTWERTE, FINCIBEC S.P.A. KONTAKTIEREN - POUR LES CERTIFICATS SPÉCIFIQUES ET LES VALEURS PONCTUELLES, CONTACTER FINCIBEC S.P.A. - PARA LOS CERTIFICADOS ESPECÍFICOS Y LOS VALORES CONCRETOS, CONTACTE CON FINCIBEC S.P.A. - ВО ПОПРОСАМ СПЕЦІАЛЬНИХ СЕРТИФІКАТІВ І ПОКАЗАТЕЛІВ СВ'ЯЖІТЬСЯ С FINCIBEC SPA

ESCLUSO PEZZI SPECIALI ED ELEMENTI DECORATIVI - WITH THE EXCEPTION OF SPECIAL PIECES AND DECORS